



OPEN

Molecular epidemiology of *Brucella* species in mixed livestock-human ecosystems in Kenya

James M. Akoko^{1,2,3}✉, Roger Pelle², AbdulHamid S. Lukambagire⁴, Eunice M. Machuka², Daniel Nthiwa⁵, Coletha Mathew⁴, Eric M. Fèvre^{3,6}, Bernard Bett³, Elizabeth A. J. Cook^{3,6}, Doreen Othoro⁷, Bassirou Bonfoh⁸, Rudovick R. Kazwala⁴, Gabriel Shirima⁹, Esther Schelling¹⁰, Jo E. B. Halliday¹¹ & Collins Ouma¹

Brucellosis, caused by several species of the genus *Brucella*, is a zoonotic disease that affects humans and animal species worldwide. Information on the *Brucella* species circulating in different hosts in Kenya is largely unknown, thus limiting the adoption of targeted control strategies. This study was conducted in multi-host livestock populations in Kenya to detect the circulating *Brucella* species and assess evidence of host–pathogen associations. Serum samples were collected from 228 cattle, 162 goats, 158 sheep, 49 camels, and 257 humans from Narok and Marsabit counties in Kenya. Information on age, location and history of abortion or retained placenta were obtained for sampled livestock. Data on age, gender and location of residence were also collected for human participants. All samples were tested using genus level real-time PCR assays with primers specific for IS711 and bcs31 targets for the detection of *Brucella*. All genus positive samples (positive for both targets) were further tested with a speciation assay for *AlkB* and *BMEI1162* targets, specific for *B. abortus* and *B. melitensis*, respectively. Samples with adequate quantities aggregating to 577 were also tested with the Rose Bengal Test (RBT). A total of 199 (33.3%) livestock and 99 (38.5%) human samples tested positive for genus *Brucella*. Animal *Brucella* PCR positive status was positively predicted by RBT positive results (OR = 8.3, 95% CI 4.0–17.1). Humans aged 21–40 years had higher odds (OR = 2.8, 95% CI 1.2–6.6) of being *Brucella* PCR positive compared to the other age categories. The data on detection of different *Brucella* species indicates that *B. abortus* was detected more often in cattle (OR = 2.3, 95% CI 1.1–4.6) and camels (OR = 2.9, 95% CI 1.3–6.3), while *B. melitensis* was detected more in sheep (OR = 3.6, 95% CI 2.0–6.7) and goats (OR = 1.7, 95% CI 1.0–3.1). Both *B. abortus* and *B. melitensis* DNA were detected in humans and in multiple livestock host species, suggesting cross-transmission of these species among the different hosts. The detection of these two zoonotic *Brucella* species in humans further underpins the importance of One Health prevention strategies that target multiple host species, especially in the multi-host livestock populations.

The genus *Brucella* consists of several species of gram negative, facultative bacteria, causing brucellosis in humans, livestock, and wildlife hosts worldwide¹. *Brucella abortus*, *B. melitensis* and *B. suis* are the most reported zoonotic species of *Brucella*². Brucellosis causes reproductive disorders such as abortion, infertility, reduced milk yield and retained placenta in livestock, while humans suffer from a long and debilitating illness that is characterized by undulating fever³. Brucellosis in humans is largely due to transmission from infected animals through consumption of raw contaminated livestock products, particularly milk or through contact with secretions from infected animals, especially during parturition⁴. *Brucella* bacteria are highly infectious, thus posing an occupational hazard

¹Department of Biomedical Sciences and Technology, Maseno University, Kisumu, Kenya. ²Biosciences Eastern and Central Africa-International Livestock Research Institute (BecA-ILRI) Hub KE, Nairobi, Kenya. ³International Livestock Research Institute, Nairobi, Kenya. ⁴Sokoine University of Agriculture, Morogoro, Tanzania. ⁵Department of Biological Sciences, University of Embu, Embu, Kenya. ⁶Institute of Infection, Veterinary and Ecological Sciences, University of Liverpool, Liverpool, UK. ⁷Department of Public Health, Maseno University, Kisumu, Kenya. ⁸Centre Suisse de Recherches Scientifiques en Côte d'Ivoire, Abidjan, Côte d'Ivoire. ⁹Nelson Mandela African Institute of Science and Technology, Arusha, Tanzania. ¹⁰Vétérinaires Sans Frontières Suisse, Bern, Switzerland. ¹¹Institute of Biodiversity, Animal Health and Comparative Medicine, College of Medical Veterinary and Life Sciences, University of Glasgow, Glasgow G12 8QQ, UK. ✉email: jamesakoko@yahoo.com

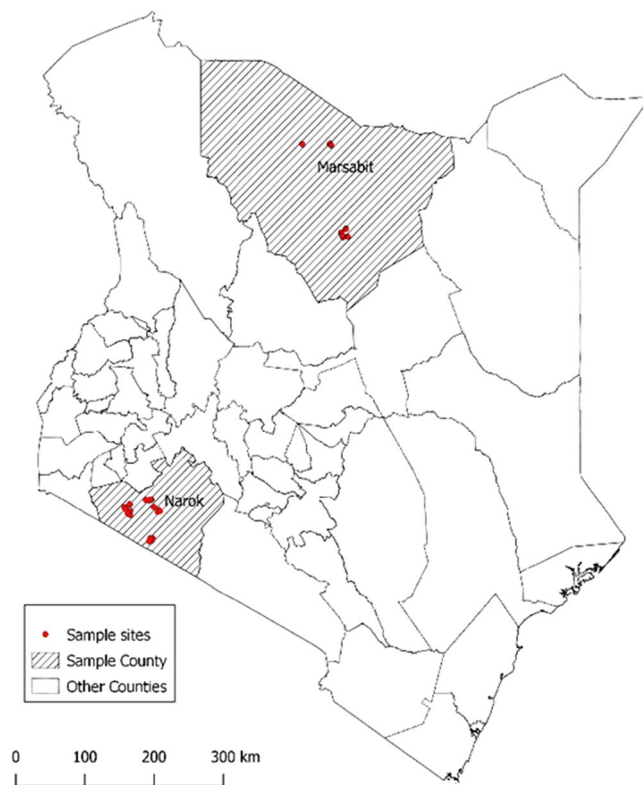


Figure 1. Map of Kenya showing the location of the study areas in Narok and Marsabit. The map was drawn by Fred Otieno using QGIS software, version 3.4.14–1 (<http://www.gisagmaps.com/qgis-download/>)¹⁹.

to persons involved in handling products from infected animals, including laboratory personnel, veterinarians, slaughter personnel and farmers who assist animals when giving birth¹.

Brucellosis remains endemic or is a re-emerging neglected zoonosis in many parts of the world, especially Africa and Asia⁵. Brucellosis is emerging as a growing problem in intensive, peri-urban, small holder dairy production systems^{6,7}. Brucellosis has been successfully controlled in several developed countries using host species-specific livestock vaccines or test and slaughter policies in animals with no history of vaccination⁸. In Kenya, seroprevalences ranging from 0.1 to 46.5% in humans^{9–11} and 1.0–38.0% in livestock have been reported, with higher prevalence recorded in pastoral areas^{9,12,13}.

While several serological studies conducted in animals and humans in many parts of sub-Saharan Africa revealed that *Brucella* antibodies are widespread, serology tests are unable to indicate which *Brucella* species were responsible for inducing antibodies in the host^{14,15}. A modelling framework that integrated serological data sets from northern Tanzania to determine the source of human infection, hypothesized that sheep and goats are the main source of human infection¹⁶. In Kenya, a strong association between human and animal *Brucella* seropositivity has also been reported⁹. However, information on the *Brucella* species circulating in the different hosts remains limited. This knowledge is key to understanding the epidemiology of brucellosis and could form the basis for the development of targeted control programs. Therefore, this study was conducted to identify the species of *Brucella* circulating in livestock and humans in the mixed livestock-human ecosystems in Narok and Marsabit in Kenya.

Methods

Study area. The study was conducted in pastoral areas of Narok and Marsabit counties in Kenya (Fig. 1). The two sites were purposefully selected due to high numbers of livestock kept in close contact with humans under a nomadic pastoralism system. Marsabit County has the highest reported *Brucella* spp. seroprevalence in humans and camels in Kenya^{8,9,13}, while several serological studies have also demonstrated the exposure to *Brucella* spp. in Narok County^{12,13,17}.

Narok County is located on the southern border of Kenya and Tanzania with an altitude of 1700–3000 m above sea level. It is a predominantly pastoral area with cattle, sheep and goats being kept in proximity with wildlife; Marsabit is the largest, most arid, and sparsely populated County in Kenya. Marsabit mostly comprises a vast lowland scrub desert ranging from 400 to 700 m above the sea level. Nomadic pastoralism that involves mixed herds of camels, cattle, sheep and goats is the main economic activity in Marsabit, practiced by up to 80% of the occupants¹⁸.

Sample size determination. The sample size was calculated using the formula for detecting presence or absence of a disease²⁰. Prevalence estimates from a previous study were assumed as 15.3% for humans, 3.3% for cattle, 3.6% for small ruminants (sheep and goats) in Narok and 46.5% for humans, 11.2% cattle, 16.1% small ruminants and 11.1% for camels in Marsabit⁹. The sample size calculated for each host was then adjusted to cater for potential clustering of *Brucella* species at the herd level using inter-cluster correlation coefficient (*icc*) of 0.4 and a sample size of 2.5 (1–5 animals) collected from each animal species at the herd level, which then translated into a design effect of 1.6. Therefore, a minimum of 228, 160, 40, 183 samples, from humans, small ruminants (sheep and goats), camels, and cattle, was estimated to be the total samples needed from the two sites.

Study design and sampling strategy for animals. Data were collected through a cross-sectional study that targeted herds with current or previous clinical signs suggestive of brucellosis. The targeted study design was adopted to increase chances of getting animals with circulating *Brucella* DNA for subsequent species identification.

Animal health providers and public health officers working in Narok and Marsabit were consulted to identify four locations from each of the two sites with reported cases of illness in animals and or people with clinical signs suggestive of brucellosis. In each location, animal herds with suspected brucellosis or reported history of brucellosis within the past two years were identified and visited. A maximum of five adult animals were randomly selected for sampling from each species within the herd when present (cattle, sheep, goats, and camels). Blood was collected via jugular venipuncture into a plain 10 ml vacutainer tube. The samples were then labeled and transported in a cool box and ice packs (~4 °C) to the field laboratory, where they were centrifuged on the same day of collection at 5000 rpm for five minutes to obtain serum. The serum samples were transported at 4 °C and stored at –20 °C until testing at the Biosciences East and Central Africa (BecA) laboratories, hosted at the International Livestock Research Institute (ILRI), Nairobi, Kenya.

Sampling strategy for humans. The health care facilities visited by people living in and around the sampled livestock populations were identified. Three dispensaries in Narok (Oloolaimutia, Talek and Aitong) were visited and included in the study. The Marsabit County hospital, serving the entire county and one dispensary in North Horr Sub-County were included in the Marsabit study site. Patients referred to the laboratory at each facility for brucellosis testing, based on clinical suspicion, were approached, and consented for inclusion in this study. Venous blood was drawn from participants into a 6 ml plain vacutainer tube by a laboratory technologist working in the study health facilities, upon receiving written informed consent. The blood samples were kept upright at room temperature for not less than 10 min to facilitate clotting, then centrifuged at 5000 rpm for five minutes to obtain serum for routine serological testing of brucellosis at the hospital. A volume of approximately 1 ml extracted serum from each human subject was aliquoted into cryotubes for this study. All human sera were also transported at 4 °C and stored at –20 °C until further molecular and serological testing at the BecA laboratory facility at ILRI, Nairobi, Kenya.

Questionnaire administration. A brief structured questionnaire was administered to the head of each household visited for animal sampling to capture information on sex, location, history of abortion and retained placenta in livestock. For human sampling, information on the age, gender, and location of residence of each sampled human subject was recorded.

Sample selection and testing rationale. This study is focused on the molecular epidemiology of *Brucella*. Therefore, the lab procedure begun with DNA extraction from all the samples for PCR testing to detect the genus *Brucella* and to identify *Brucella* spp. Samples with sufficient quantities were later selected for RBT testing to assess if RBT positive status could be used as a predictor for PCR positivity.

DNA extraction and purification. Genomic DNA was extracted from all serum samples using QIAamp DNA mini kit, (QIAGEN Germany) as per manufacturer's guidelines. Briefly, 20 µl of proteinase K was added to 200 µl serum, mixed with 200 µl of lysis buffer and left to digest at room temperature for 2 h. The lysate was then loaded into the spin columns (provided with the kit), and manufacturers guidelines followed, before eluting the genomic DNA in 50 µl of elution buffer. The DNA quality and quantity for each of the extracts derived from the original sera were assessed using a NanoDrop 2000c Spectrophotometer (ThermoFisher Scientific, USA) before being stored at –20 °C until PCR was done.

Real-time PCR. The PCR assays were first optimized to our local environmental conditions with reference to published standards (supplementary material S1). Each DNA extract was tested using primers targeting the *Brucella*-specific insertion sequence IS711 to detect the genus *Brucella* as previously published²¹. A second assay was also run independently on all the samples with the *bcs*p31 target, as adopted from a previous study to detect *Brucella* genus²². See supplementary table S2 for primer and probe details. Both quantitative PCR assays were performed using an ABI 7500 thermocycler machine (Applied Biosystems, Life Technologies, Singapore). All reaction mixtures (20 µl) were prepared by mixing 4 µl of DNA template with 0.25 µM of fluorescent probe, 0.5 µM of each of the primers and 10 µl of the Luna Universal Probe qPCR master mix (404 with UDG; New England BioLabs, MA, USA). All test runs were performed with the following PCR conditions; pretreatment with UDG 50 °C for 2 min, then polymerase activation and DNA denaturation at 95 °C for 10 min, followed by 40 cycles of 95 °C for 15 s of amplification step, then 1 min of annealing at 57 °C. The positive controls (DNA extracts from *Brucella* strains, *B. melitensis* 16M and *B. abortus* 544) used in this study were both sourced from

the Friedrich-Loeffler-Institute *Brucella* Reference Laboratory in Germany). Positive controls, no template control and samples were all loaded in duplicates before sealing the plate in every run. A run was only considered valid if all negative/no-template controls did not amplify, and positive controls amplified within agreeable range of the standard curve equivalent. A test run was classified as valid when amplification was observed for positive controls and no amplification was observed for the negative controls.

All samples that showed amplification and a cycle threshold (Ct) value < 40 in one or both duplicate wells were considered assay positive. Samples positive in both the IS711 and bcs31 assays were classified as *Brucella* genus PCR positive. Samples classified as *Brucella* spp. positive were then subjected to a multiplex speciation assay²² with oligonucleotide primers and probes detecting specific IS711 insertions downstream of the *alkB* gene for *B. abortus* and downstream of the BMEI1162 locus for *B. melitensis*. Speciation assays were run using identical reaction volumes and conditions as described above on an ABI 7500 thermocycler. All samples, no template control, *B. abortus* and *B. melitensis* positive controls were tested in duplicates in all the runs. Any sample with amplification and a cycle threshold (Ct) value < 40 with the respective target was classified as positive for *B. abortus* or *B. melitensis*.

Rose Bengal Test (RBT). Animal and human serum samples were tested for antibodies against *Brucella* spp. using the RBT. The test was conducted, with the rapid slide agglutination suspension of *B. abortus* biovar 1 Weybridge strain No. 99 antigen (RSA-RB, IDVet, France). Briefly, the antigen and serum samples were brought to room temperature in a biosafety cabinet and vortexed. Thereafter, 25 µl of each serum sample (for cattle and camels) or 30 µl (for goat, sheep, and human sera) were mixed with an equal volume of antigen on the glossy side of a white tile using a clean, wooden splint. The tile was then gently rocked at room temperature for four minutes before observing agglutination under natural light. Any sample that had visible agglutination after four minutes was considered as RBT positive²³.

Data management and analysis. All the data were merged and cleaned in MS Excel version 2018 (IBM, California). Further analyses were performed using R statistical software version 3.6.3²⁴. Descriptive analyses were done using the aggregated data from both sites. Analyses of associations between *Brucella* spp. PCR test status in animal and human populations were performed using mixed effects logistic regression models created with the function *glmer* in the package *lme4*²⁵ with sampling location included as a random effect, and the data being specified as having binomial distribution. Variables evaluated in the human model to assess association with PCR status included age category, gender and RBT results. For livestock, variable history of abortion, RBT status, animal spp. and history of retained placenta were included in the model as potential predictors for *Brucella* PCR status. In this model male ruminants and camels were excluded due to absence of appropriate clinical history (abortion and retained placenta) and low numbers of observations of the assessed variables, respectively.

For analysis of *B. abortus* and *B. melitensis* outcomes data from humans and livestock were combined to evaluate the influence of host species on *Brucella* species detection. The percentage positive for each test by species and site was calculated and plotted, with binomial exact confidence intervals. Both models were fitted with sampling location included as a random effect, and the data being specified as having binomial distribution.

The maximal models were simplified using a likelihood ratio tests, with a p-value of ≤ 0.05 being considered statistically significant to get the final models. The intra-cluster correlation coefficients (*icc*) for within-location clustering of brucellosis for both livestock and humans were calculated from the variance components of the final multivariable models using the *icc* function in *sjstats* package²⁶.

Ethics approval and consent to participate. The research approval for this study was granted by the National Commission for Science, Technology, and Innovation (Ref. no. NACOSTI/P/19/81438/29438). Additional approvals for both livestock and human components of the study were provided by ILRI's Institutional Animal Care and Use Committee (Ref. no. ILRI-IACUC2018-16) and Research Ethics Committee (Ref. no. ILRI-IREC2018-14), respectively. ILRI is recognized by the National Commission for Science and Technology in Kenya (NACOSTI/NBC/AC/01813) and internationally by the Federation wide assurance (number FWA00026536) to review and approve research studies. The research was performed in accordance with the relevant guidelines and regulations prescribed by the above research regulatory committees. For human subjects, a written informed consent was sought and obtained from all the adult participants (18 years and above), while parent's consent was obtained for participants below the age of 12 years and both the parent or guardian consent together with the subject's assent obtained for those between 13–17 years of age. The livestock owners also provided informed consent before inclusion into the study.

Results

Livestock population summary, RBT and *Brucella* spp. PCR results. The demographic characteristics of the sampled livestock are summarized in Table 1. A total of 597 livestock including 228 cattle, 162 goats, 158 sheep were sampled from Narok and Marsabit Counties combined. Camels (n = 49) were sampled in Marsabit County only, as these animals were not kept in Narok County. Most samples were collected from female animals (92%) (Table 1). Both IS711 and bcs31 targets detected *Brucella* spp. in our samples (supplementary table S3). The results of the RBT and the genus-specific *Brucella* spp. PCR are shown in Table 1. The overall RBT positivity in livestock was 23.3% in cattle; 8.3% in goats; 5.7% in sheep; and 9.3% in camels (Table 1). The overall PCR positivity of *Brucella* spp. detected by PCR in livestock was 18.9% in cattle; 38.3% in goats; 38% in sheep; and 69.4% in camels (Table 1). The proportion of animals with a history of retained placenta was 2% and those with previous abortion was 12% (Table 1).

Variable	Category	Rose Bengal results			PCR results		
		Total	No RBT positive	% RBT positive (95% CI)	Total	Number PCR positive	% <i>Brucella</i> spp. PCR positive (95% CI)
Species	Cattle	228	55	24.1 (18.7–30.2)	228	43	18.9 (14.0–24.6)
	Goats	158	38	8.2 (4.5–13.7)	162	62	38.3 (30.8–46.2)
	Sheep	138	8	5.4 (2.3–10.4)	158	60	38.0 (30.4–46.0)
	Camels	41	4	9.8 (2.7–23.1)	49	34	69.4 (54.6–81.7)
Sex	Male	45	19	13.3 (5.1–26.8)	45	19	42.2 (27.7–57.8)
	Female	530	74	14.0 (11.1–17.2)	552	180	32.6 (28.7–36.7)
Abortion	No	508	63	12.4 (9.7–15.6)	527	164	31.1 (21.2–35.3)
	Yes	67	17	25.4 (15.5–37.5)	70	35	50.0 (37.8–62.2)
Retained placenta	No	568	78	16.0 (12.9–19.6)	585	192	33.3 (29.5–37.3)
	Yes	10	2	25.0 (3.2–65.1)	12	7	63.6 (30.8–89.0)
Total	Total samples	575	80	13.9 (11.1–17.0)	597	199	33.3 (29.6–37.3)

Table 1. Summary of livestock population composition, descriptive characteristics, RBT results and *Brucella* spp. PCR results. PCR polymerase chain reaction, CI confidence interval, RBT Rose Bengal Test.

Variable	Category	Narok		Marsabit		Combined human data		
		Total tested	Number PCR positive	Total tested	Number PCR positive	Total tested	Number PCR positive	% <i>Brucella</i> spp. PCR positive (95% CI)
Age category (years)	≤20	39	13	18	2	58	16	27.6 (16.7–40.9)
	21–40	65	36	54	24	99	52	52.5 (42.2–62.7)
	>40	23	8	10	3	54	17	31.5 (19.5–45.6)
RBT result	Negative	116	31	76	25	192	58	30.2 (26.2–34.4)
	Positive	48	12	15	7	46	20	43.5 (28.9–58.9)
Gender	Male	55	22	54	18	109	40	36.7 (27.7–46.4)
	Female	92	38	56	21	148	59	39.9 (31.9–48.2)
Total (site)	Total samples	147	60	110	39	257	99	38.5 (32.5–44.8)

Table 2. Summary of human population descriptive, RBT results and *Brucella* spp. PCR results among suspected brucellosis patients referred for testing at the sampled medical facilities. PCR polymerase chain reaction, CI confidence interval, RBT Rose Bengal Test.

Variables	Category (years)	Odds ratio (95% CI)	Odds ratio P-value	LRT χ^2	LRT p-value	Df
Age category	≤20	1 (baseline)		9.81	0.03	2
	21–40	2.8 (1.2–6.6)	0.016			
	>40	1.2 (0.4–3.1)	0.771			

Table 3. Summary of the final mixed-effects logistic regression models run to assess associations between variables and *Brucella* spp. PCR status in human. CI confidence interval, LRT χ^2 Likelihood Ratio Test Chi-square value, P-value according to Pearson Chi-square test, Df degrees of freedom.

Human population summary, RBT and *Brucella* spp. PCR results. A total of 257 humans were sampled (110 in Marsabit and 147 in Narok). Majority of samples were collected from female participants (57.6%). The age of human participants ranged from 3 to 96 years with the mean age of 32.6 years. Participant age was converted into a categorical variable with 3 levels for analysis: ≤20 years, 21–40 and >40 years.

The overall PCR positivity of *Brucella* spp. in humans was 40.1% (95% CI 32.5–44.8), while the RBT positivity was 19.3% (95% CI 14.5–24.9, n = 238) (Table 2).

Factors associated with *Brucella* spp. PCR status in humans. The final model fitted for human *Brucella* spp. PCR status only had age category as a significant variable positively associated with *Brucella* PCR status, LRT $\chi^2 = 9.8$ (Table 3). Individuals aged 21–40 were more likely to be PCR positive than individuals with an age category of less or equal to 20 years (Table 3). Sex and RBT status were not significantly associated with PCR status, therefore, we dropped the variables from the final model. The *icc* for within-location clustering of human brucellosis estimated for this model was <0.001 (0.0–0.9).

Variables	Category (years)	Odds ratio (95% CI)	Odds ratio P-value	LRT χ^2	LRT p-value	Df
Animal species	Cattle	1 (baseline)		7.99	0.018	2
	Goats	2.6 (1.3–5.2)	0.005			
	Sheep	2.2 (1.1–4.6)	0.036			
RBT	Positive	8.3 (4.0–17.1)	<0.001	35.98	<0.001	1

Table 4. Summary of multivariable mixed-effects logistic regression models run to predict *Brucella* spp. PCR status in livestock. Location $icc = 0.4$. CI confidence interval, P-value according to Pearson Chi-square test, Df degrees of freedom, RBT Rose Bengal Test, icc intra-cluster correlation coefficients.

Level	Positivity for targeted <i>Brucella</i> spp.		Univariable mixed-effects logistic regression				
Host	n/N	% positivity and (95% CI)	Odds Ratio 95% CI	Odds ratio P-value	LRT χ^2	LRT p-value	LRT df
Cattle	26/43	60.5 (44.4–75.0)	Baseline		16.71	0.002	4
Goats	15/62	24.2 (14.2–36.7)	0.2 (0.1–0.6)	0.003			
Sheep	12/60	20.0 (10.8–32.3)	0.2 (0.1–0.5)	0.001			
Camel	22/34	64.7 (46.4–80.3)	0.9 (0.3–2.7)	0.916			
Human	44/99	44.4 (34.5–54.8)	0.5 (0.2–1.0)	0.055			

Table 5. Summary of mixed-effects logistic regression models of *Brucella abortus* status in different host species. Location $icc = 0.10$. CI confidence interval, LRT χ^2 Likelihood Ratio Test Chi-square value, P-value according to Pearson Chi-square test, n number of positives, N total number tested.

Level	Positivity for targeted <i>Brucella</i> spp.		Univariable mixed-effects logistic regression				
Host	n/N	% positivity and (95% CI)	Odds Ratio 95% CI	Odds ratio P-value	LRT χ^2	LRT p-value	LRT df
Goats	31/62	50.0 (37.0–63.0)	Baseline		22.98	<0.001	4
Cattle	7/43	16.3 (06.8–30.7)	0.2 (0.1–0.6)	0.003			
Sheep	38/60	63.3 (49.9–75.4)	1.8 (0.8–3.8)	0.134			
Camel	6/34	17.6 (06.8–34.5)	0.3 (0.1–0.9)	0.037			
Human	29/99	29.3 (20.6–39.3)	0.5 (0.3–1.2)	0.177			

Table 6. Summary of mixed-effects logistic regression models of *Brucella melitensis* status in different host species. Location $icc = 0.05$. CI confidence interval, LRT χ^2 Likelihood Ratio Test Chi-square value, P-value according to Pearson Chi-square test, n number of positives, N total number tested.

Factors predicting *Brucella* spp. PCR positivity in livestock. There was a positive and significant relationship between RBT status and *Brucella* PCR status, with RBT seropositive animals having elevated odds (OR = 8.3, 95% CI 4.0–17.1) of testing positive by PCR. Goats and sheep had higher odds (OR = 2.6, 95% CI 1.3–5.2) and (OR = 2.2, 95% CI 1.1–4.6) respectively of being PCR positive for *Brucella* spp. compared to cattle (Table 4).

Detection of *Brucella abortus* and *Brucella melitensis*. Of 298 *Brucella* spp. PCR positive livestock and human samples, 117 (39.3%) were positive for the *B. abortus* specific target, 111 (37.2%) were positive for the *B. melitensis* target and 68 (22.8%) did not amplify with either *B. abortus* or *B. melitensis* primer targets. No samples amplified with more than one target. The distribution of *Brucella* spp. differed in the two study sites, with *B. abortus* detected in most typed samples from Marsabit 50 (67.7.0%, 95% CI 54.8–77.1), whereas *B. melitensis* was detected in majority of typed samples from Narok 54 (65.9%, 95% CI 54.6–76.0).

Brucella abortus was detected in all species with the highest positivity in camels (64.7%), followed by cattle (60.5%), humans (44.4%), goats (24.2%), and sheep (20.0%). Sheep and goats had a significant reduced odds of association OR = 0.2, 95% CI 0.1–0.5 and OR = 0.2, 95% CI 0.06, with *B. abortus* compared to cattle, while the lower odds observed in camels and humans were not significant when compared with cattle (Table 5).

Brucella melitensis was found in the highest proportion in sheep (63.3%), followed by goats (50.0%), humans (29.3%), camel (22.2%), and cattle (16.3%). The mixed-effects model found that sheep had higher odds of being associated with *B. melitensis* OR = 1.8, 95% CI 0.8–3.8, while cattle, camels and humans had lower odds OR = 0.2, 95% CI 0.1–0.6, OR = 0.3, 95% CI 0.1–0.9, and OR = 0.5, 95% CI 0.3–1.2 compared to goats respectively (Table 6).

Analysis of *Brucella* spp. detected in different animal hosts in Marsabit and Narok gave a similar distribution trend that is comparable to those observed in the combined data (Fig. 2).

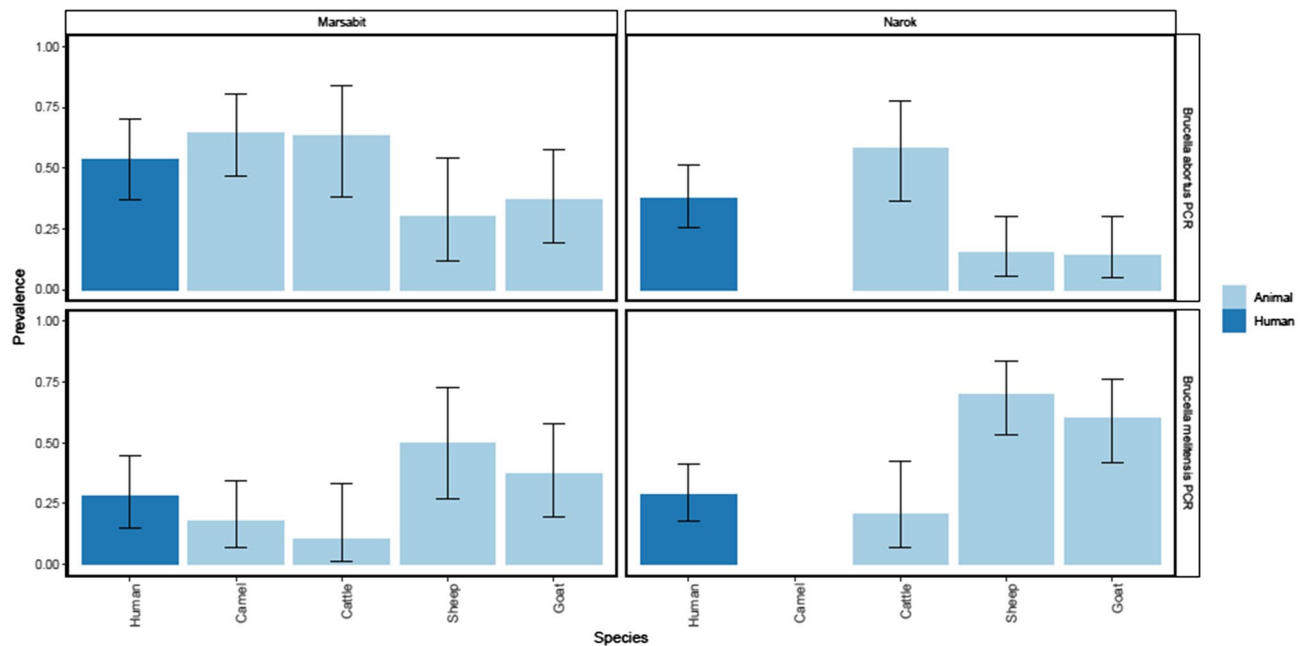


Figure 2. Graphical presentation of the proportion of each host species testing positive for *B. abortus* and *B. melitensis* in Narok and Marsabit. The four panels show data for each site and *Brucella* species respectively. In each panel the bars indicate the proportion of each species testing positive. The error bars indicate exact binomial confidence intervals.

Discussion

This molecular study on the epidemiology of *Brucella* spp. in various host species has highlighted some key findings: we detected *Brucella* DNA in serum from humans and all the livestock species studied. This study also identified RBT positive status as a significant predictor for *Brucella* PCR positivity in livestock, while age category was associated with *Brucella* PCR positive status in humans. Finally, both *B. abortus* and *B. melitensis* were detected in humans and all the livestock species included in the study.

The detection of *Brucella* in four different animal hosts indicates a complex epidemiology. In this study, we have demonstrated that camels have a higher proportion of *Brucella* PCR positives than other species. This could partly be attributed to the high frequencies of migration of camel herds²⁷ that enhance sharing of grazing areas and watering points or direct interactions between herds, thereby increasing their exposure to infectious pathogens such as *Brucella*. Detection of zoonotic species *Brucella* (*B. abortus* and *B. melitensis*) in camels could present a public health problem, given the steady rise in camel populations in Kenya²⁸, primarily for milk production^{29–31}. Consumption of raw milk⁹, and the significant increase in production of camel milk^{29,32} and the extensive reach of camel milk value chains further highlight the need for more investigations and intervention programs to control the potential role of camels in transmission of brucellosis to humans, and other possible zoonotic diseases.

People within the age of 21–40 years were more likely to get positive *Brucella* PCR status. Earlier studies have also reported higher prevalence rate in humans within the similar age category^{33,34}. Based on observation made during field data collection, the high positivity in the age group 21–40 years could be attributed to their primary responsibility of herding, milking, and helping animals during parturition. Thus, having the highest exposure compared to the younger population (below 21 years) that are either school going or have less contact when taking care of animals. Those above 40 years of age tend to take more leadership roles as they reduce their active involvement in taking care of animals, hence reducing their risk of acquiring zoonotic infection through direct contact with the animals or contaminated animal products. This finding is comparable to earlier studies³⁵ that reported high prevalence of brucellosis in the same age category and associated this to their occupational roles with livestock. The distribution of human cases across all age groups points to consumption of contaminated animal products as an alternative transmission route as observed by other studies within the region^{36,37}.

Our study found out that the odds of *Brucella* PCR positive status were eight times higher in animals with RBT positive results compared with those with negative results. This finding agrees with earlier recommendation that RBT is an appropriate test to be used for diagnosis of brucellosis and may be a useful screening test in low resource regions where PCR testing is constrained³⁸. However, these two tests detect different markers of infection and even though complementary, they give overlapping but different information³⁹. The low sensitivity of RBT observed in this study, and previous studies^{40–42} makes it necessary for it to be considered alongside other serological tests such as ELISA, slow Agglutination Tests (SAT) the Fluorescence Polarization Assay (FPA) and Complement Fixation Tests (CFT)^{43–45}. This study however, exploited quantitative real-time PCR assays to detect *Brucella* DNA extracted from serum samples of the various hosts. Real-time PCR assays have been recommended as rapid and sensitive tests for detection of *Brucella* spp.^{21,46}. In this study, we tested DNA extracted from serum samples for *Brucella* positivity. Serum has been previously shown to be a good sample type for *Brucella* DNA

detection in livestock and humans⁴⁷. The exploitation of the same sample type for both serological testing (to advise *Brucella* exposure), and direct nucleic acid detection is a growing field of brucellosis diagnosis^{47–49}. The added convenience of bypassing the need for tedious and dangerous culture procedures makes PCR a powerful brucellosis surveillance tool. Future studies should focus on generating more data to explore the agreement between serology and molecular approaches, and how each of the approaches informs about infection status in animals and humans.

Location was used as a random effect in our analysis to account for the potential effect of clustering of *Brucella* PCR positive cases in the models. The *icc* for location was estimated to be 0.4 for the livestock dataset. This is an indication that brucellosis infection in livestock tends to cluster within locations, which may be due to close or frequent interaction of herds within the same location. However, the human PCR positive cases were not clustered by locations (*icc* = 0). This may be attributed to the fact that humans may not only get exposed to *Brucella* infection within their residential location but could also acquire infection in other locations through consumption of contaminated animal products and contact with infected animals or their products. The broader distribution of milk and other dairy products in Kenya⁵⁰ may also contribute to the lack of clustering of brucellosis cases in humans.

Both *B. abortus* and *B. melitensis* were detected in all livestock species. Our findings of both species of the pathogen across all hosts is consistent with earlier reports that *Brucella* spp. are not host specific and that cross transmission of *Brucella* spp. from one livestock host to the other could be occurring in areas with close interaction between different animal species¹⁴. Congregation of animals around communal watering points, keeping of mixed herds, and sharing of grazing sites have been reported to increase chances of brucellosis transmission¹⁰. Therefore, this could have contributed to the cross transmission of *Brucella* spp. observed in the two pastoral areas studied. We identified *B. abortus* most commonly in cattle and camels, while infection in sheep and goats were mainly associated with *B. melitensis*. This finding is consistent with existing knowledge on the preferential nature of *Brucella* spp. in the different animal hosts⁵¹.

Brucellosis infection in sheep and goats with *B. melitensis* is endemic in East Africa with earlier studies in Kenya in 1972⁵² and 1976⁵³, in Tanzania 1967⁵⁴, and 1996⁵⁵ reporting presence of *B. melitensis* in the region. Earlier studies in East Africa also reported circulation of *B. abortus* in cattle in Kenya 2002⁵⁶, in Tanzania^{57, 58} and in Uganda⁵⁹. This study is among the first reports of *Brucella* spp. circulating in camels in Kenya, although infection of camels with *B. abortus* has also been reported in Sudan⁶⁰ and Pakistan⁶¹.

Our study found that *B. abortus* and *B. melitensis* are detectable in humans with clinical suspicion of brucellosis in Narok and Marsabit. Previous findings in the wider region, also reported the presence of *B. abortus* and *B. melitensis* in the human population^{62, 63}. Human infection with *Brucella* spp. may be transmitted from multiple livestock species, given that *B. abortus* and *B. melitensis* detected in humans were also found in cattle, sheep, goats, and camels kept in the same locality. Brucellosis control programs aimed at reducing human brucellosis should therefore target all livestock hosts studied.

Abortions and retained placenta were rarely reported in our study, therefore our ability to assess their association with *Brucella* PCR status was limited by the low numbers of observations. The targeted study design limits the power of inference to population level prevalence but could have also contributed to the high PCR positivity reported in the study. The PCR speciation assay used only targeted *B. abortus* and *melitensis*. Therefore, 22.8% of the genus *Brucella* PCR positive samples that did not amplify with our two targets could not be identified, and other *Brucella* species circulating in the targeted population might have been missed. Future studies could focus on the known risk factors for positivity, more epidemiologically focused study designs and improved typing options using real-time PCR to address some of these prevailing challenges in the molecular epidemiology of brucellosis in the region.

Conclusion

This is among the first studies in the region to undertake a population level molecular study aimed at detecting circulating species of *Brucella* in several livestock hosts and humans. This study provided evidence of the presence of *B. abortus* and *B. melitensis* in multiple livestock species and humans in Kenya. Future studies should consider expanding the range of real-time PCR typing options to shed more light on all the *Brucella* species present in the targeted population. Our findings also confirmed that *B. melitensis* have a significant positive association with sheep and goats, while *B. abortus* is associated with cattle and camels. Cross transmission of different *Brucella* spp. between different animal hosts and the potential of human infection being caused by multiple livestock hosts was also highlighted. Brucellosis control programs in Kenya should use a One Health strategy targeting multiple host species.

Data availability

All the data are included in this article and its supplementary files.

Received: 29 September 2020; Accepted: 9 April 2021

Published online: 23 April 2021

References

1. D'Anastasio, R., Staniscia, T., Milia, M. L., Manzoli, L. & Capasso, L. Origin, evolution and paleoepidemiology of brucellosis. *Epidemiol. Infect.* [Internet]. 139(1), 149–156 (2011). <http://www.ncbi.nlm.nih.gov/pubmed/20447329>.
2. Alton, L. *Laboratory Techniques in Brucellosis*, Vol. 91, 408–409 (Harefuah, 1976).
3. Megid, J., Mathias, L. A. & Robles, C. A. Clinical manifestations of brucellosis in domestic animals and humans. *Open Vet. Sci. J.* [Internet] 4(1), 119–126 (2010).

4. Goonaratna, C. Brucellosis in humans and animals. *Ceylon Med. J.* [Internet]. **52**(2), 66 (2009). www.who.int/csr/resources/publications/Brucellosis.pdf.
5. Seleem, M. N., Boyle, S. M. & Sriranganathan, N. Brucellosis: A re-emerging zoonosis. *Vet. Microbiol.* **140**(3), 392–398 (2010).
6. Ducrottoy, M. *et al.* Narrative overview of animal and human brucellosis in Morocco: Intensification of livestock production as a driver for emergence ?. *Infect. Dis. Poverty* [Internet] <https://doi.org/10.1186/s40249-015-0086-5> (2015).
7. Njeru, M. F. *et al.* Human brucellosis in febrile patients seeking treatment at remote hospitals, Northeastern Kenya, 2014–2015. *Emerg. Infect. Dis.* **2007**(7), 2014–2015 (2016).
8. McDermott, J. J. & Arimi, S. Brucellosis in sub-Saharan Africa: Epidemiology, control and impact. *Vet. Microbiol.* **90**(1), 111–134 (2002).
9. Osoro, E. M. *et al.* Strong association between human and animal brucella seropositivity in a linked study in Kenya, 2012–2013. *Am. J. Trop. Med. Hyg.* **93**(2), 224–231 (2015).
10. Kairu-Wanyoike, S. *et al.* Positive association between *Brucella* spp. Seroprevalences in livestock and humans from a cross-sectional study in Garissa and Tana River Counties, Kenya. *PLoS Negl. Trop. Dis.* [Internet] **13**(10), 1–15. <https://doi.org/10.1371/journal.pntd.0007506> (2019).
11. Kiambi, S. G., Fèvre, E. M., Omolo, J., Oundo, J. & de Glanville, W. A. Risk factors for acute human brucellosis in Jjara, north-eastern Kenya. *PLoS Negl. Trop. Dis.* **14**(4), e0008108 (2020).
12. Nthiwa, D., Alonso, S., Odongo, D., Kenya, E. & Bett, B. Zoonotic pathogen seroprevalence in cattle in a wildlife–livestock interface, Kenya. *Ecohealth* [Internet] **16**(4), 712–725. <https://doi.org/10.1007/s10393-019-01453-z> (2019).
13. Njeru, J. *et al.* Systematic review of brucellosis in Kenya: Disease frequency in humans and animals and risk factors for human infection. *BMC Public Health* [Internet] **16**(1), 1–15. <https://doi.org/10.1186/s12889-016-3532-9> (2016).
14. Godfroid, J. *et al.* A “One Health” surveillance and control of brucellosis in developing countries: Moving away from improvisation. *Comp. Immunol. Microbiol. Infect. Dis.* [Internet] **36**(3), 241–248. <https://doi.org/10.1016/j.cimid.2012.09.001> (2013).
15. Godfroid, J. *et al.* Brucellosis at the animal/ecosystem/human interface at the beginning of the 21st century. *Prev. Vet. Med.* [Internet] **102**(2), 118–131. <https://doi.org/10.1016/j.prevetmed.2011.04.007> (2011).
16. Viana, M. *et al.* Integrating serological and genetic data to quantify cross-species transmission: Brucellosis as a case study. *Parasitology* **143**(7), 821–834 (2016).
17. Bailey, P. & Doern, C. Brucellosis in rural Narok County, Kenya: A retrospective review. *Open Forum Infect. Dis.* **6**, S614–S615 (2019).
18. Fratkin, E., Nathan, M. A. & Roth, E. A. Is settling good for pastoralists? The effects of pastoral sedentarization on children’s nutrition, growth, and health among Rendille and Ariaal of Marsabit District, Northern Kenya, 02111, 27–28 (2006). <https://pdfs.semanticscholar.org/212f/08b904fbc600958ebf53369748354a28e5ae.pdf>.
19. Vitalis, S., Arroyo Otori, K. & Stoter, J. CityJSON in QGIS: Development of an open-source plugin. *Trans GIS* (2020).
20. Dohoo, I. R., Martin, S. W. & Stryhn, H. *Methods in Epidemiologic Research* (VER Inc., 2012). [Internet].
21. Matero, P. *et al.* Rapid field detection assays for *Bacillus anthracis*, *Brucella* spp., *Francisella tularensis* and *Yersinia pestis*. *Clin. Microbiol. Infect.* [Internet] <https://doi.org/10.1111/j.1469-0691.2010.03178.x> (2011).
22. Robert, W., Schrader Kimmi, N., Khuong, N. Y., Bystrom, S. L. & Graves, M. H. Real-time multiplex PCR assay for detection of *Brucella* spp. *J. Clin. Microbiol.* **42**(3), 1290–1293 (2004).
23. World Health Organization. Brucellosis in humans and animals: WHO guidance [Internet]. WHO Library (World Health Organization, 2006). http://www.who.int/csr/resources/publications/deliberate/WHO_CDS_EPR_2006_7/en/.
24. R Core Team. An Introduction to dplyr. *Ind. Commer. Train* [Internet] **10**(1), 11–18 (2008). <https://www.gbif.org/tool/81287/r-a-language-and-environment-for-statistical-computing>.
25. Bates, D., Mächler, M., Bolker, B. M. & Walker, S. C. Fitting linear mixed-effects models using lme4. *J. Stat. Softw.* <https://doi.org/10.18637/jss.v067.i01> (2014).
26. Brecht, A. *et al.* Package ‘prevalence’ R [Internet] (2015). <http://cran.r-project.org/web/packages/prevalence/prevalence.pdf>.
27. O’Connor, D. A., Butt, B. & Fofopoulos, J. B. Mapping the ecological footprint of large livestock overlapping with wildlife in Kenyan pastoralist landscapes. *Afr. J. Ecol.* **54**, 114–117 (2016).
28. FAO. Bovine brucellosis in Sub-Saharan Africa: Estimation of sero-prevalence and impact on meat and milk off-take potential (2002). <ftp://ftp.fao.org/docrep/fao/009/ag274e/ag274e00.pdf>.
29. Masinga, M., Kimenyi, D. & Kivolonzi, P. The camel milk industry in Kenya: Results of a study commissioned by SNV to explore the potential of camel milk from Isiolo District (2008).
30. Watson, E. E., Kochore, H. H. & Dabasso, B. H. Camels and climate resilience: Adaptation in northern Kenya. *Hum. Ecol. Interdiscip. J.* **44**, 701–713 (2016).
31. Muloi, D. *et al.* Value chain analysis and sanitary risks of the camel milk system supplying Nairobi city, Kenya. *Prev. Vet. Med.* **159**, 203–210 (2018).
32. Noor, I. M., Bebe, B. O. & Guliye, A. Y. Analysis of an emerging peri-urban camel production in Isiolo County, Northern Kenya. *J. Camelid Sci.* **2012**, 41–61 (2012).
33. Alkahtani, A. M., Assiry, M. M., Chandramoorthy, H. C., Al-Hakami, A. M. & Hamid, M. E. Sero-prevalence and risk factors of brucellosis among suspected febrile patients attending a referral hospital in southern Saudi Arabia (2014–2018). *BMC Infect. Dis.* **20**(1), 1–8 (2020).
34. Muloki, H. N. *et al.* Prevalence and risk factors for brucellosis in prolonged fever patients in post-conflict Northern Uganda. *Afr. Health Sci.* **18**(1), 22–28 (2018).
35. Assafi, M. & Al-berfkani, M. I. The seroprevalence of human brucellosis in different age groups patients and other associated risk factors in Duhok, Iraq. *Innovacionia* **7**, 1–7 (2019).
36. Bodenham, R. F. *et al.* Prevalence and speciation of brucellosis in febrile patients from a pastoralist community of Tanzania. *Sci. Rep.* [Internet] <https://doi.org/10.1038/s41598-020-62849-4> (2020).
37. Migisha, R. *et al.* Prevalence and risk factors of brucellosis among febrile patients attending a community hospital in south western Uganda. *Sci. Rep.* **8**, 15465 (2018).
38. Zakaria, A. M. Comparative assessment of sensitivity and specificity of rose bengal test and modified in-house ELISA by using IS711 TaqMan Real Time PCR assay as a gold standard for the diagnosis of bovine brucellosis. *Biomed. Pharmacol. J.* **11**(2), 951–957 (2018).
39. Al Dahouk, S., Tomaso, H., Nöckler, K., Neubauer, H. & Frangoulidis, D. Laboratory-based diagnosis of brucellosis—A review of the literature Part I: Techniques for direct detection and identification of *Brucella* spp. *Clin. Lab.* **49**, 487–505 (2003).
40. Ahasan, M. S., Rahman, M. S., Rahman, A. K. M. A. & Berkvens, D. Bovine and Caprine Brucellosis in Bangladesh: Bayesian evaluation of four serological tests, true prevalence, and associated risk factors in household animals. *Trop. Anim. Health Prod.* **49**, 1–11 (2017).
41. Muma, J. B. *et al.* Evaluation of three serological tests for brucellosis in naturally infected cattle using latent class analysis. *Vet. Microbiol.* **125**, 187–192 (2007).
42. Sanogo, M., Fretin, D., Thys, E. & Saegerman, C. Exploring the diversity of field strains of *Brucella abortus* biovar 3 isolated in West Africa. *Front. Microbiol.* **8**, 1–8 (2017).
43. Kalleshmurthy, T. *et al.* Comparative evaluation of fluorescence polarization assay and competitive ELISA for the diagnosis of bovine brucellosis vis-a-vis sero-monitoring. *J. Microbiol. Methods* **170**, 105858 (2020).

44. Chisi, S. L. *et al.* An evaluation of serological tests in the diagnosis of bovine brucellosis in naturally infected cattle in KwaZulu-Natal province in South Africa. *J. S. Afr. Vet. Assoc.* <https://doi.org/10.4102/jsava.v88i0.1381> (2017).
45. Díaz-Aparicio, E. *et al.* Evaluation of serological tests for diagnosis of *Brucella melitensis* infection of goats [Internet]. *J. Clin. Microbiol.* **32**, 1159–1165 (1994). <http://www.pubmedcentral.nih.gov/articlerender.fcgi?artid=263630&tool=pmcentrez&rendertype=abstract>.
46. Al Dahouk, S. *et al.* Evaluation of genus-specific and species-specific real-time PCR assays for the identification of *Brucella* spp. *Clin. Chem. Lab. Med.* **45**, 1464–1470 (2007).
47. Zerva, L., Bourantas, K., Mitka, S., Kansouzidou, A. & Legakis, N. J. Serum is the preferred clinical specimen for diagnosis of human brucellosis by PCR. *J. Clin. Microbiol.* **39**, 1661–1664 (2001).
48. Akoko, J. *et al.* Serological and molecular evidence of *Brucella* species in the rapidly growing pig sector in Kenya. *BMC Vet. Res.* [Internet] <https://doi.org/10.1186/s12917-020-02346-y> (2020).
49. Al Dahouk, S., Tomaso, H., Nöckler, K. & Neubauer, H. The detection of *Brucella* spp. using PCR-ELISA and real-time PCR assays. *Clin. Lab.* **50**, 387–394 (2004).
50. Kiambi, S. *et al.* Mapping Nairobi's dairy food system: An essential analysis for policy, industry and research. *Agric Syst.* **167**, 47–60 (2018).
51. OIE. Brucellosis (*B. abortus*, *B. melitensis* and *B. suis*) (2016). <https://www.oie.int/en/animal-health-in-the-world/animal-diseases/Brucellosis/>.
52. Philpott, M. & Auko, O. Caprine brucellosis in Kenya. *Br. Vet. J.* [Internet] **128**(12), 642–651 (1972).
53. Oomen, L. J. Human brucellosis in Kenya. *Trop. Geogr. Med.* [Internet] **28**(1), 45–33 (1976). <http://europepmc.org/abstract/MED/941242>.
54. Mahlau, E. A. & Hamond, J. A. Brucellosis survey of the western areas of Tanganyika. *Bull. Epizoot. Dis. Afr.* **10**, 511–512 (1962).
55. Tekle, M., Legesse, M., Edao, B. M., Ameni, G. & Mamo, G. Isolation and identification of *Brucellamelitensis* using bacteriological and molecular tools from aborted goats in the Afar region of north-eastern Ethiopia. *BMC Microbiol.* **19**, 1–6 (2019).
56. Muendo, E. N. *et al.* Infection of cattle in Kenya with *Brucella abortus* biovar 3 and *Brucella melitensis* biovar 1 genotypes. *Trop. Anim. Health Prod.* **44**(1), 17–20 (2012).
57. Mathew, C. *et al.* First isolation, identification, phenotypic and genotypic characterization of *Brucella abortus* biovar 3 from dairy cattle in Tanzania. *BMC Vet. Res.* [Internet]. **11**, 156 (2015). <http://www.pubmedcentral.nih.gov/articlerender.fcgi?artid=4508816&tool=pmcentrez&rendertype=abstract>.
58. Assenga, J. A., Matemba, L. E., Muller, S. K., Malakalinga, J. J. & Kazwala, R. R. Epidemiology of *Brucella* infection in the human, livestock and wildlife interface in the Katavi-Rukwa ecosystem, Tanzania. *BMC Vet. Res.* [Internet] **11**(1), 189. <https://doi.org/10.1186/s12917-015-0504-8> (2015).
59. Mugizi, D. R. *et al.* Isolation and molecular characterization of *Brucella* isolates in cattle milk in Uganda. *Biomed. Res. Int.* [Internet] **2015**, 1–9 (2015). <http://www.hindawi.com/journals/bmri/2015/720413/>.
60. Damir, H. A., Tageldin, M. H., Kenyon, S. J. & Idris, O. F. Isolation of *Brucella abortus* from experimentally infected dromedary camels in Sudan: A preliminary report. *Vet. Res. Commun.* **13**, 403–406 (1989).
61. Fatima, S., Khan, I., Nasir, A. & Younus, M. Serological, molecular detection and potential risk factors associated with camel brucellosis in Pakistan. *Trop. Anim. Health Prod.* [Internet] **48**, 1711–1718. <https://doi.org/10.1007/s11250-016-1148-9> (2016).
62. Bodenham, R. F. *et al.* Prevalence and speciation of brucellosis in febrile patients from a pastoralist community of Tanzania. *Sci. Rep.* [Internet] **10**(1), 1–11. <https://doi.org/10.1038/s41598-020-62849-4> (2020).
63. Njeru, J. *et al.* Human brucellosis in febrile patients. *Emerg. Infect. Dis.* **22**(12), 2014–2015 (2016).

Acknowledgements

We appreciate the support offered by the veterinary and medical departments in Narok and Marsabit Counties. We greatly acknowledge the contribution of the hospital staffs and patients attending the sampled health facilities, as well as pastoralists in our study sites. We are grateful to Prof. Heinrich Neubauer and Dr. Falk Melzer from Friedrich-Loeffler-Institute, for offering the controls for this study. We also appreciate the diagnostic training offered by Dr. Roland Ashford (from the Animal and Plant Health Agency (APHA), UK) that guided the development of aspects of laboratory protocols.

Author contributions

Concept development: J.A., C.O., E.S., G.S., R.K., B.B., Formal analysis: J.A., J.H., A.L., D.N., E.C., C.O., B.Bett, Funding acquisition: B.B., R.K., R.P., Investigation: J.A., C.O., R.P., D.O., B.Bett, E.C., Methodology: J.A., J.H., E.S., R.P., A.L., C.M., G.S., D.O., Supervision: C.O., G.S., E.S., R.P., E.F., **Writing original draft: J.A., D.N., A.L.**, Writing review and editing: All Authors. All the authors have read and approved the manuscript.

Funding

This study was supported by the DELTAS Africa Initiative [Afrique One-ASPIRE/DEL-15-008] and the Africa Biosciences Challenge Fund (ABCF) fellowship. Afrique One-ASPIRE is funded by a consortium of donors including the African Academy of Sciences (AAS) Alliance for Accelerating Excellence in Science in Africa (AESA), the New Partnership for Africa's Development Planning and Coordinating (NEPAD) Agency, the Wellcome Trust [107753/A/15/Z] and the UK government. And the ABCF program is funded by the Australian Department for Foreign Affairs and Trade (DFAT) through the BecA-CSIRO partnership; the Syngenta Foundation for Sustainable Agriculture (SFA); the Bill & Melinda Gates Foundation (BMGF); the UK Department for International Development (DFID) and the Swedish International Development Cooperation Agency (Sida). J.A and B.Bett were also funded by the United States Defense Threat Reduction Agency (GRANT 12686246_R, to B.Bett). The funders had no role in the study design, data collection and analysis, writing or choice of the journal.

Competing interests

The authors declare no competing interests.

Additional information

Supplementary Information The online version contains supplementary material available at <https://doi.org/10.1038/s41598-021-88327-z>.

Correspondence and requests for materials should be addressed to J.M.A.

Reprints and permissions information is available at www.nature.com/reprints.

Publisher's note Springer Nature remains neutral with regard to jurisdictional claims in published maps and institutional affiliations.



Open Access This article is licensed under a Creative Commons Attribution 4.0 International License, which permits use, sharing, adaptation, distribution and reproduction in any medium or format, as long as you give appropriate credit to the original author(s) and the source, provide a link to the Creative Commons licence, and indicate if changes were made. The images or other third party material in this article are included in the article's Creative Commons licence, unless indicated otherwise in a credit line to the material. If material is not included in the article's Creative Commons licence and your intended use is not permitted by statutory regulation or exceeds the permitted use, you will need to obtain permission directly from the copyright holder. To view a copy of this licence, visit <http://creativecommons.org/licenses/by/4.0/>.

© The Author(s) 2021

Terms and Conditions

Springer Nature journal content, brought to you courtesy of Springer Nature Customer Service Center GmbH (“Springer Nature”).

Springer Nature supports a reasonable amount of sharing of research papers by authors, subscribers and authorised users (“Users”), for small-scale personal, non-commercial use provided that all copyright, trade and service marks and other proprietary notices are maintained. By accessing, sharing, receiving or otherwise using the Springer Nature journal content you agree to these terms of use (“Terms”). For these purposes, Springer Nature considers academic use (by researchers and students) to be non-commercial.

These Terms are supplementary and will apply in addition to any applicable website terms and conditions, a relevant site licence or a personal subscription. These Terms will prevail over any conflict or ambiguity with regards to the relevant terms, a site licence or a personal subscription (to the extent of the conflict or ambiguity only). For Creative Commons-licensed articles, the terms of the Creative Commons license used will apply.

We collect and use personal data to provide access to the Springer Nature journal content. We may also use these personal data internally within ResearchGate and Springer Nature and as agreed share it, in an anonymised way, for purposes of tracking, analysis and reporting. We will not otherwise disclose your personal data outside the ResearchGate or the Springer Nature group of companies unless we have your permission as detailed in the Privacy Policy.

While Users may use the Springer Nature journal content for small scale, personal non-commercial use, it is important to note that Users may not:

1. use such content for the purpose of providing other users with access on a regular or large scale basis or as a means to circumvent access control;
2. use such content where to do so would be considered a criminal or statutory offence in any jurisdiction, or gives rise to civil liability, or is otherwise unlawful;
3. falsely or misleadingly imply or suggest endorsement, approval, sponsorship, or association unless explicitly agreed to by Springer Nature in writing;
4. use bots or other automated methods to access the content or redirect messages
5. override any security feature or exclusionary protocol; or
6. share the content in order to create substitute for Springer Nature products or services or a systematic database of Springer Nature journal content.

In line with the restriction against commercial use, Springer Nature does not permit the creation of a product or service that creates revenue, royalties, rent or income from our content or its inclusion as part of a paid for service or for other commercial gain. Springer Nature journal content cannot be used for inter-library loans and librarians may not upload Springer Nature journal content on a large scale into their, or any other, institutional repository.

These terms of use are reviewed regularly and may be amended at any time. Springer Nature is not obligated to publish any information or content on this website and may remove it or features or functionality at our sole discretion, at any time with or without notice. Springer Nature may revoke this licence to you at any time and remove access to any copies of the Springer Nature journal content which have been saved.

To the fullest extent permitted by law, Springer Nature makes no warranties, representations or guarantees to Users, either express or implied with respect to the Springer nature journal content and all parties disclaim and waive any implied warranties or warranties imposed by law, including merchantability or fitness for any particular purpose.

Please note that these rights do not automatically extend to content, data or other material published by Springer Nature that may be licensed from third parties.

If you would like to use or distribute our Springer Nature journal content to a wider audience or on a regular basis or in any other manner not expressly permitted by these Terms, please contact Springer Nature at

onlineservice@springernature.com